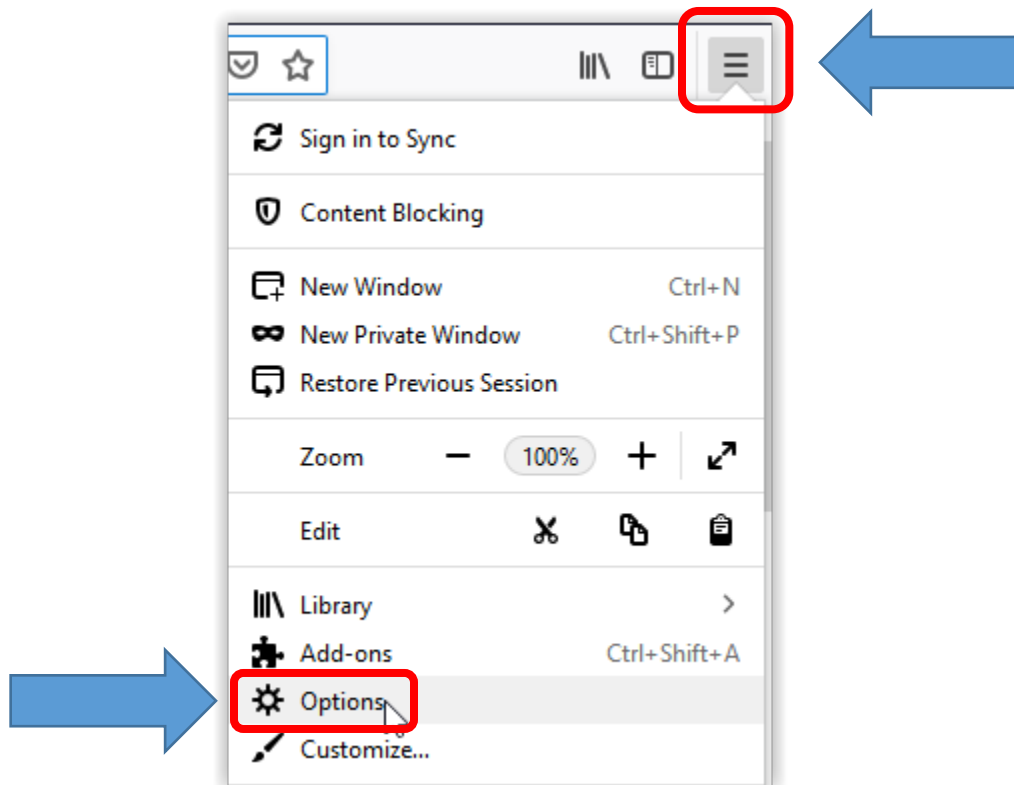


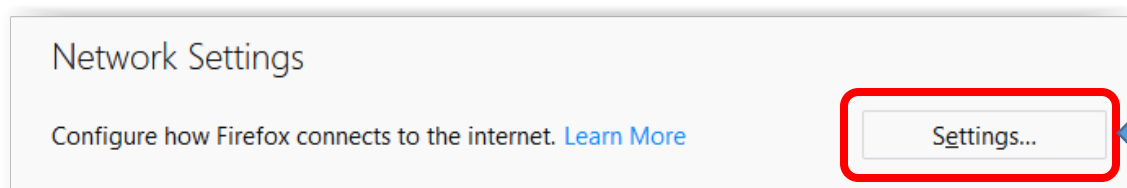
## Installing the library Proxy on your computer

Using Mozilla Firefox

1. Click on the 3 lines icon to open the menu and click on “Options”.



2. Scroll down to “Network Settings” and click on “Settings...”.



3. The “Connection Settings” window will open.
4. Check “Automatic proxy configuration URL”.
5. Enter <https://proxy.biblio.polymtl.ca/> in the field.
6. Click “OK”.

