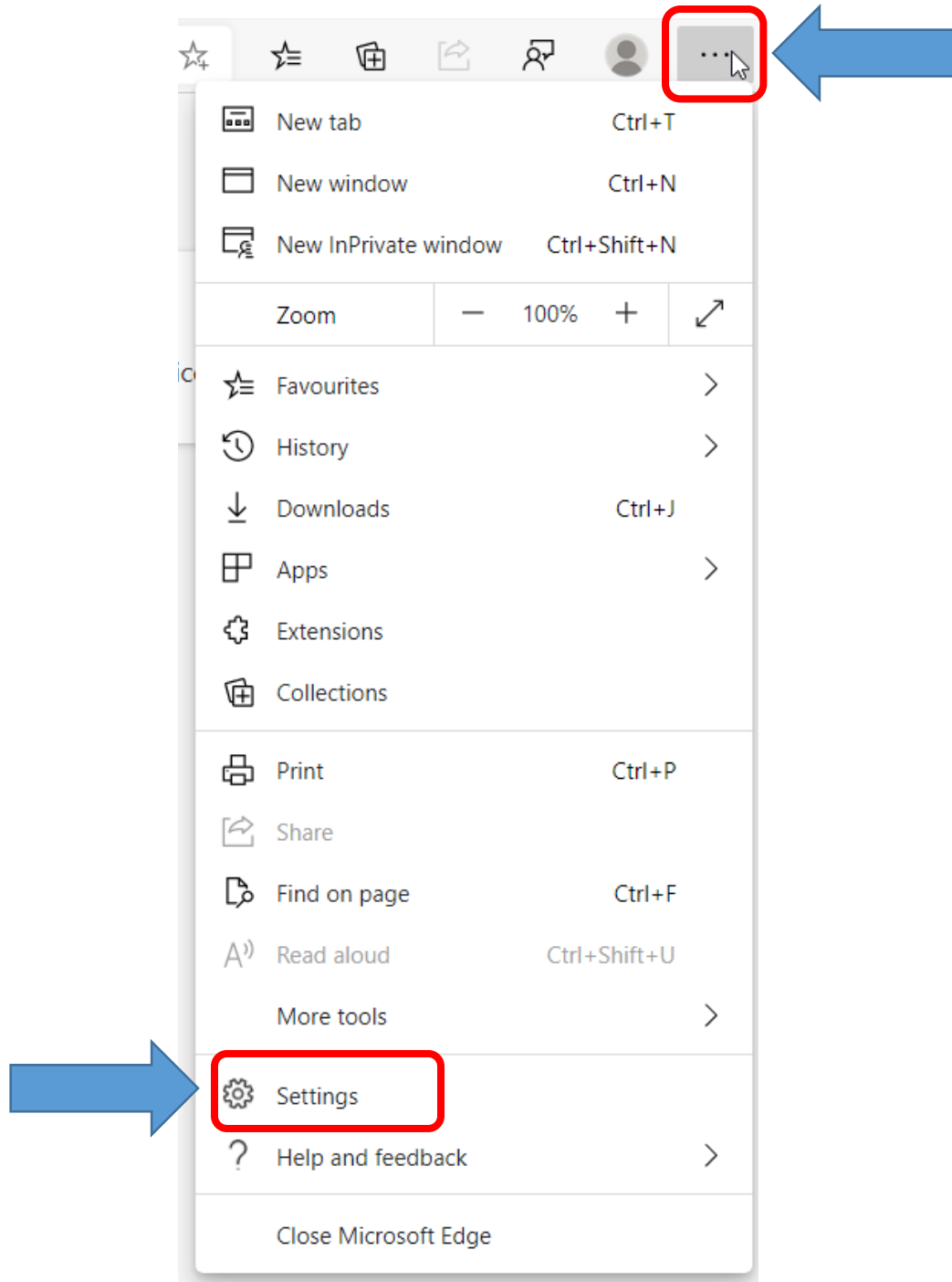
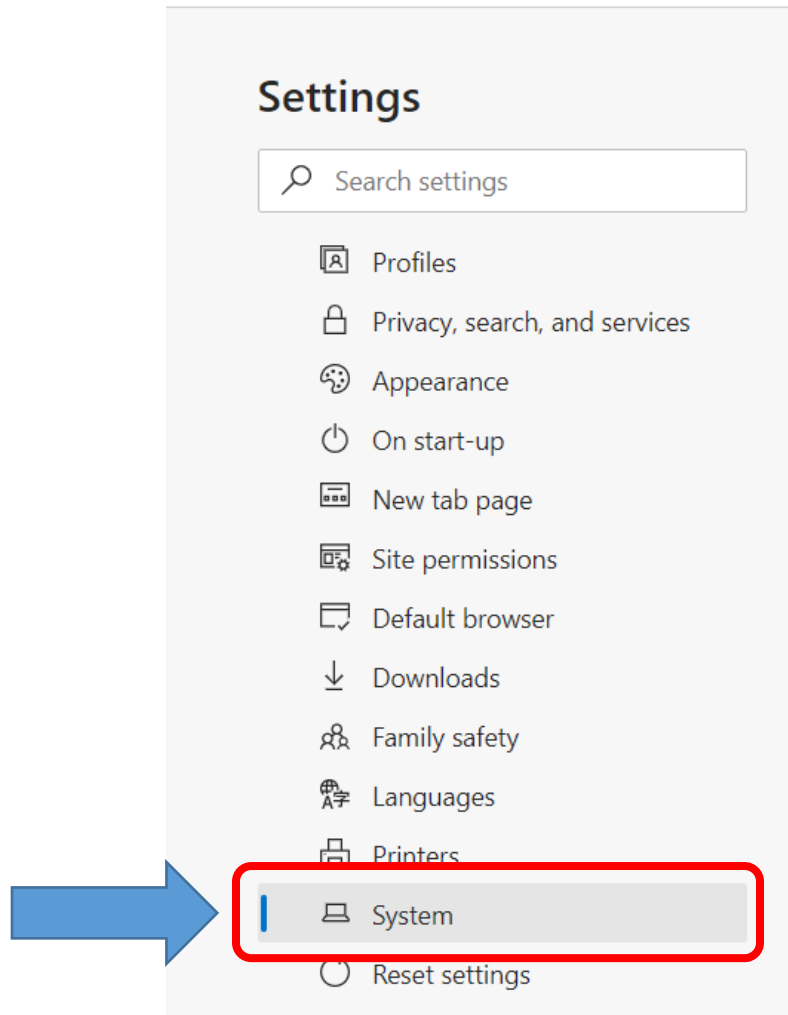


Installing the library Proxy on your computer Using Microsoft Edge

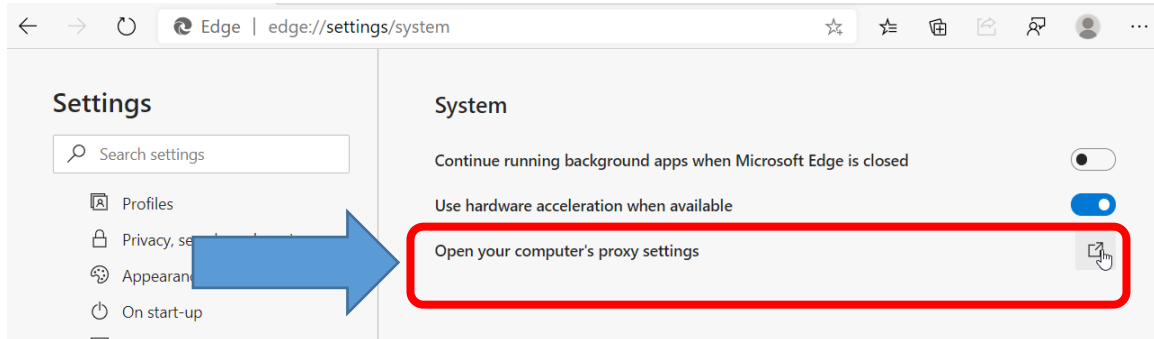
1. Click on the 3 dots icon to open the “Setting and more” menu and click on “Settings”.



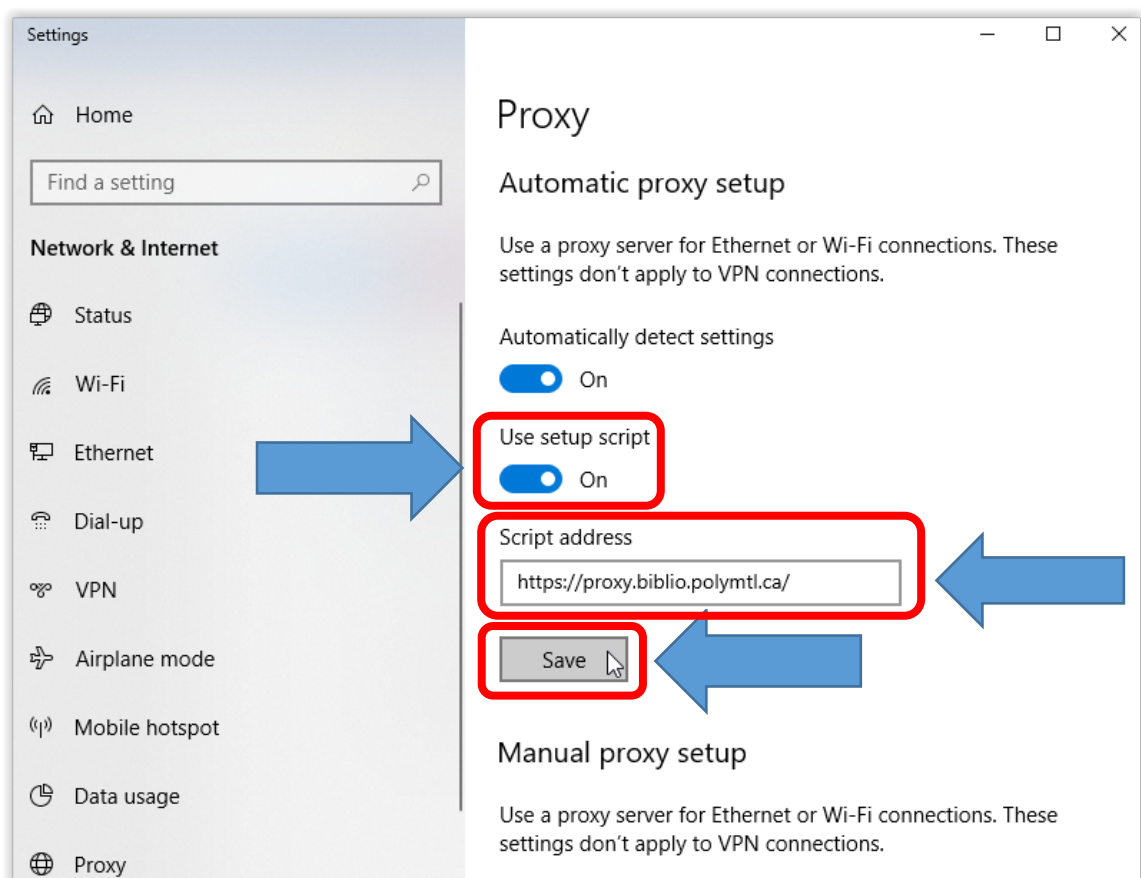
2. Scroll down and click on “**Systems**”.



3. Click on “Open your computer’s proxy settings”.



4. The “Network & Internet” settings window will open.



5. Slide the “Use setup script” button to the “On” position.

6. Under “Script address”, type <https://proxy.biblio.polymtl.ca/>.

7. Click “Save”.