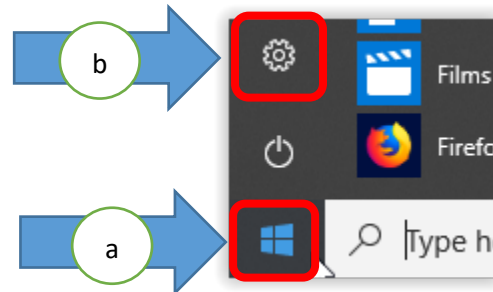
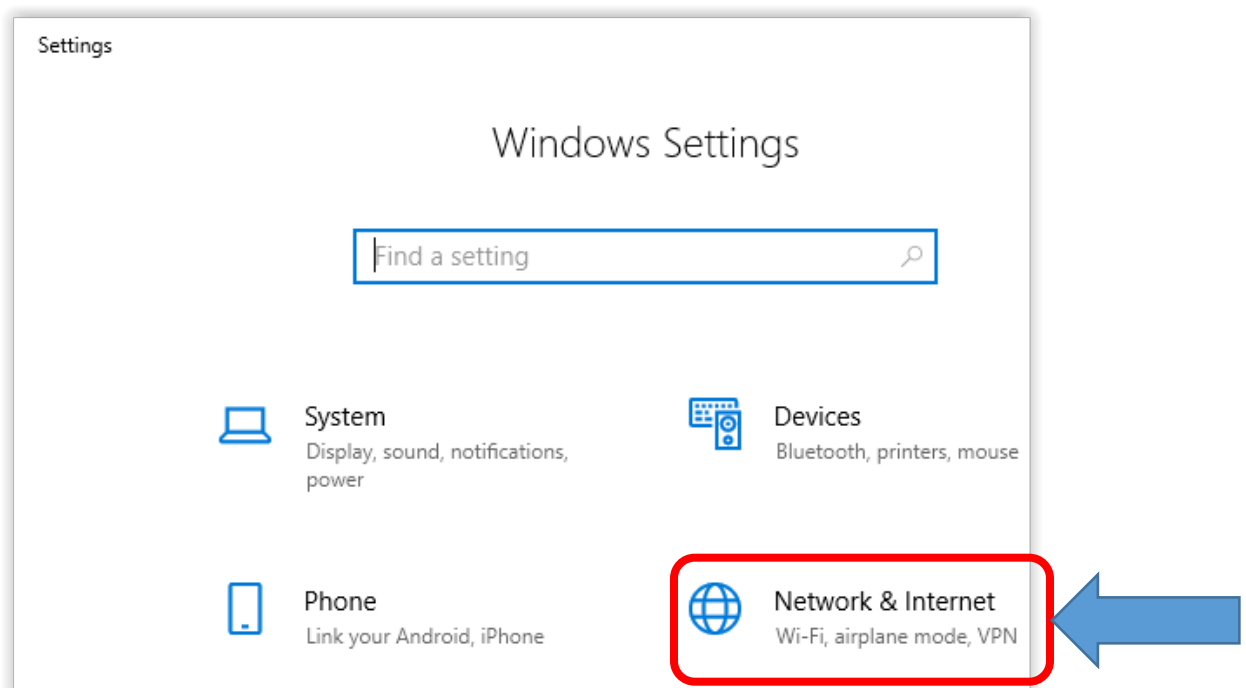


Installing the library Proxy on your computer Using Microsoft Windows 10

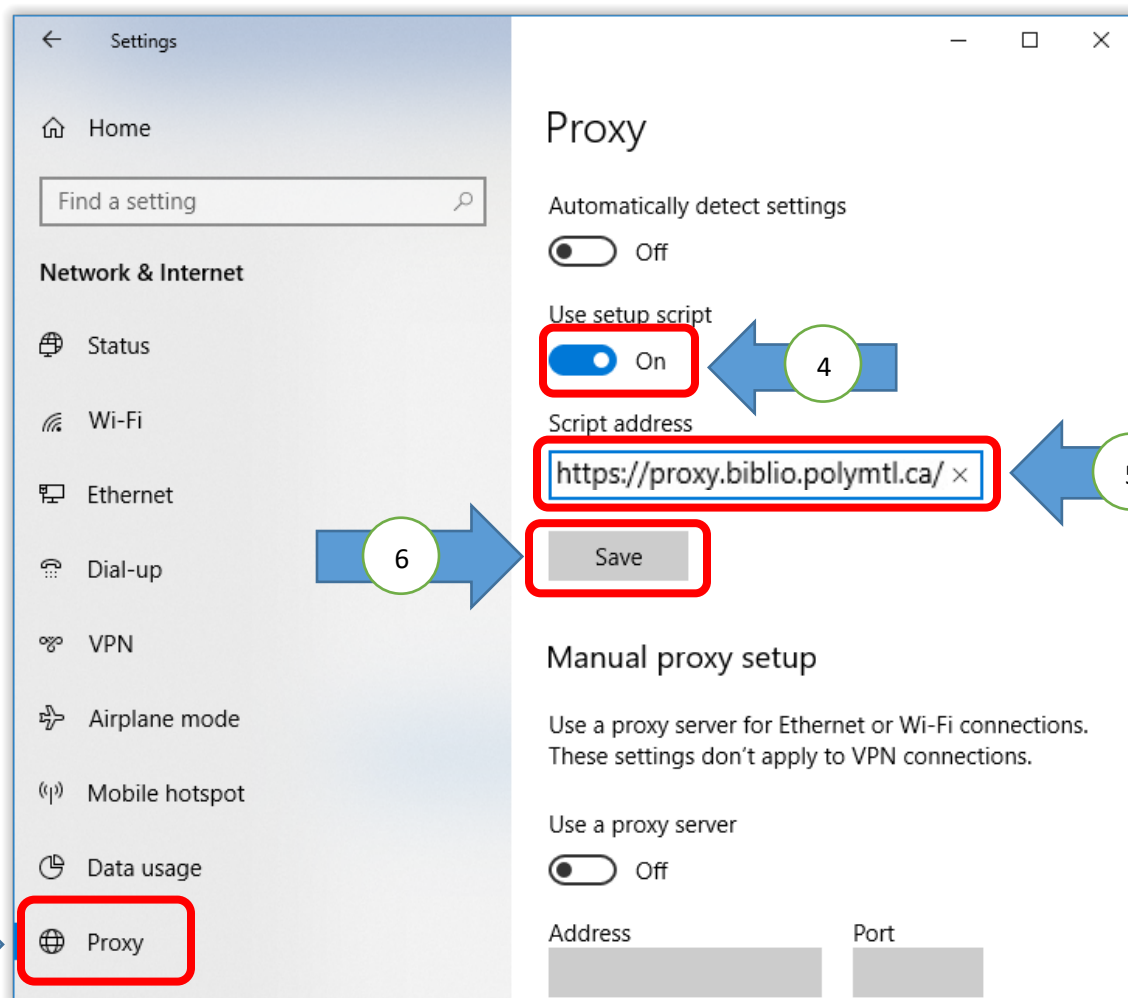
1. Click on the Windows icon (a), then on the settings icon (b), to open the “Settings” window.



2. Click on “Network & Internet”.



- The “Network & Internet” menu will open to the left of the “Settings” window. Click on “Proxy” in the menu.



- Click on “Use setup script” to make it slide to the “On” position.
- In the “Script address” field, enter <https://proxy.biblio.polymtl.ca/>.
- Click “Save”.